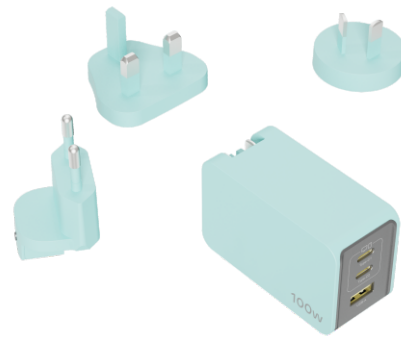


# PD Fast Charger UES100LZ1-SPC

## Features

- ◆ AC input voltage range 180-264VAC
- ◆ 3 standard 3pin+2pin combined AC sockets
- ◆ 2 standard Type-C output ports; 1 USB-A output port;  
It can fast charging more devices at the same time
- ◆ Protections against: short circuit/over current/over voltage/over temperature
- ◆ They are conveniently sized and portable for personal use anytime, anywhere
- ◆ Type-C Support PD3.0, PPS, QC3.0, QC2.0 Fast charging protocol
- ◆ USB-A Support QC3.0, QC2.0 Fast charging protocol
- ◆ When charging multiple devices simultaneously, intelligent power distribution enables each device to get optimal charging;



**NEW**

UES100LZ1-SPC

Input Voltage Range	90-264VAC	Operating Temperature	-5~25°C
Input Current	1.8A	Operating Humidity	-40~80°C
Average Efficiency	Energy efficiency level VI	Height	5% to 95% non condensing
Output Voltage Tolerance	±5%	MTBF	100,000 hours at full load at 25°C ambient, calculated per MIL-HDBK-217
Standby Power	0.3W MAX		
Safety Standard	Meet CCC(GB4943.1), CB(IEC62368-1)		
Weight	About 205g	Dimensions	73.0mm(L);45.0mm(W);33.5mm(H)
Applications	Notebook, Mobile phone, Game console, PDA and other charging devices		

## Output data (UES100LZ1-SPC)

### Output Port Combination

Type-C1/C2	5V/9V/12V/15V,3A; 20V/5A; 100W Max
USB-A	5V/3A,9V/3A,12V/3A; 20V/3A; 60W Max
Type-C1+C2	65W+35W; 100W Max
Type-C1+A	65W+30W; 95W Max
Type-C2+A	5V/3A+5V/3A; 30W Max
Type-C1+C2+A	65W+5V/3A+5V/3A; 95W Max

Z: U-AC Plug for US & JP  
C-AC Plug for CN

## Standard

EMC standard	EN55032/CISPR32;EN55035/CISPR35
Conduction & Radiation	EN55032/CISPR32 Class B
Harmonic Currents	IEC/EN 61000-3-2 Class A
Voltage Flicker	IEC/EN 61000-3-3
ESD	IEC/EN 61000-4-2 ±8KV Air, ±4KV Contact Class B
Radiated Immunity	IEC/EN 61000-4-3 3V/m Class B
EFT/Burst	IEC/EN 61000-4-4 ±1KV Class B
Surge	IEC/EN 61000-4-5 ±1KV DM
Conducted Immunity	IEC/EN 61000-4-6 3Vrms Class B
Dips & Interruptions	IEC/EN 61000-4-11 0%, 70%, 0% of UT